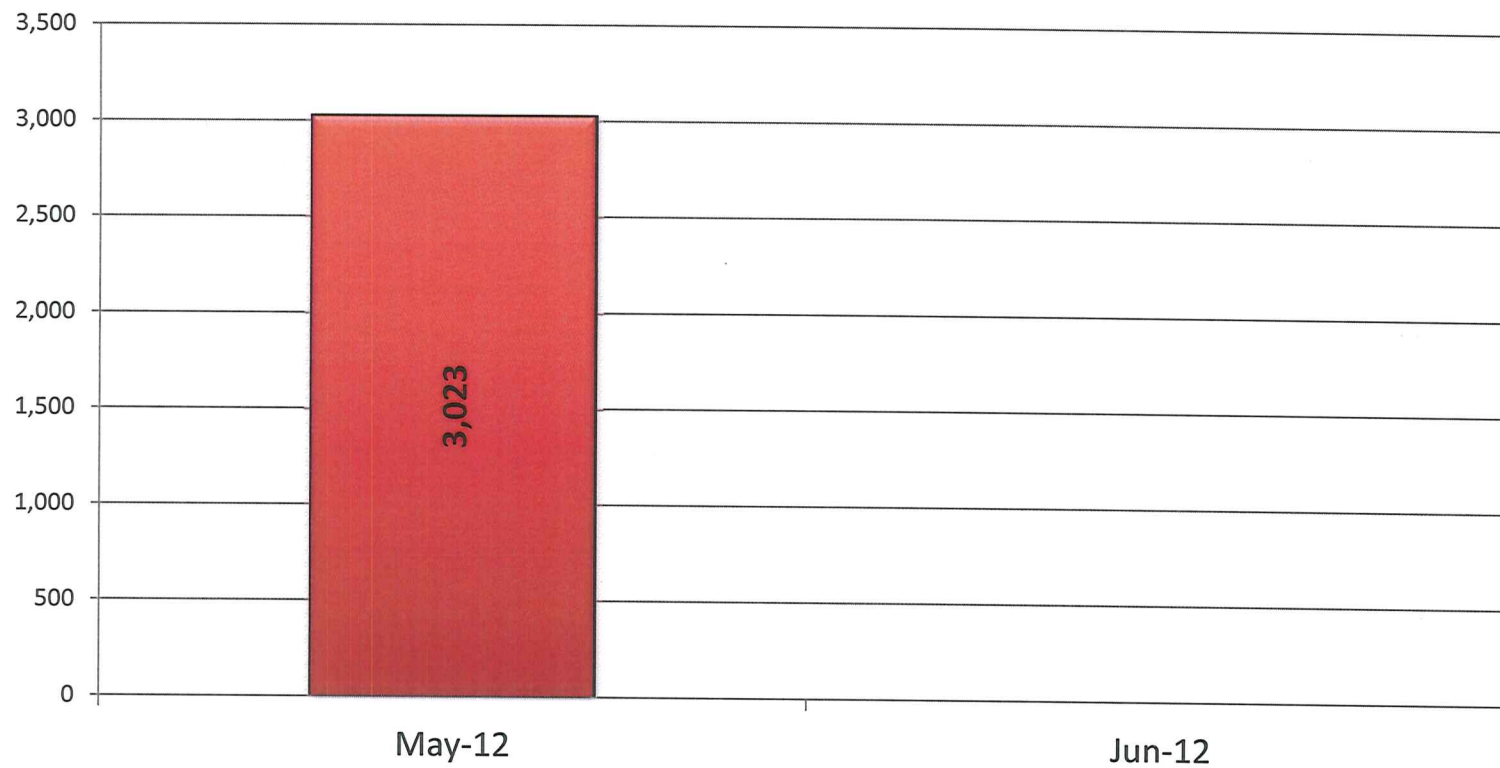
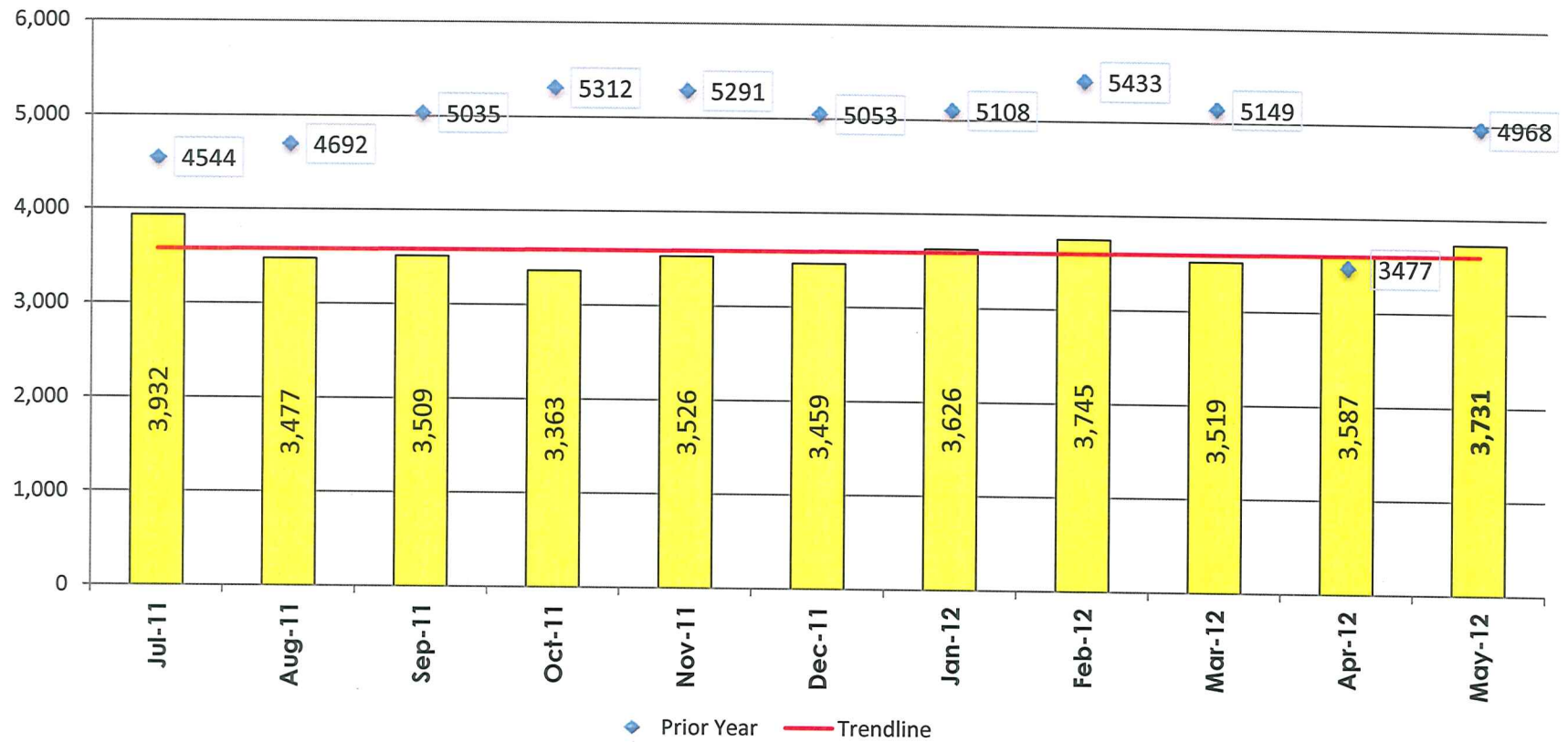


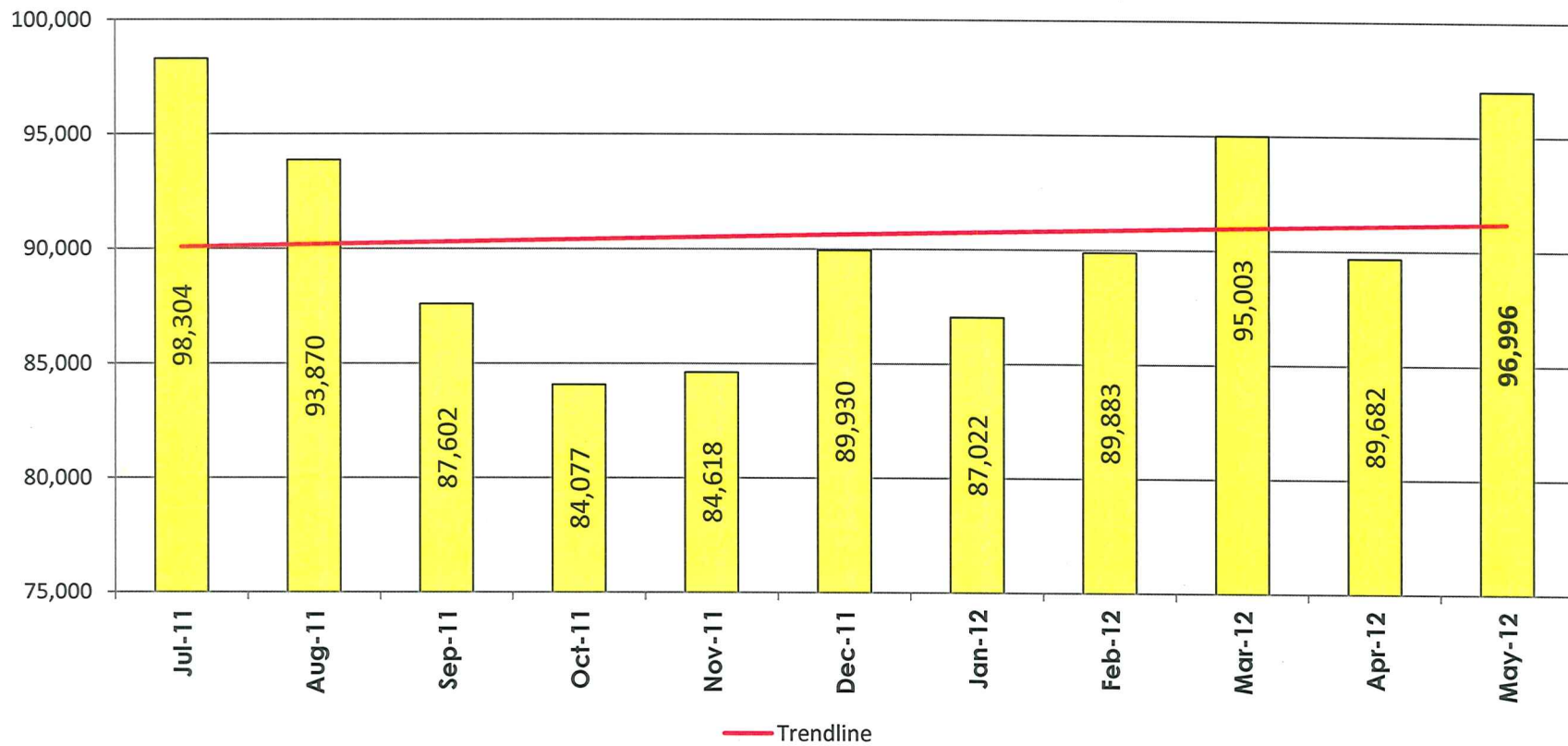
POLK STATE COLLEGE - FIXED ROUTE MONTHLY RIDERSHIP FY11-12



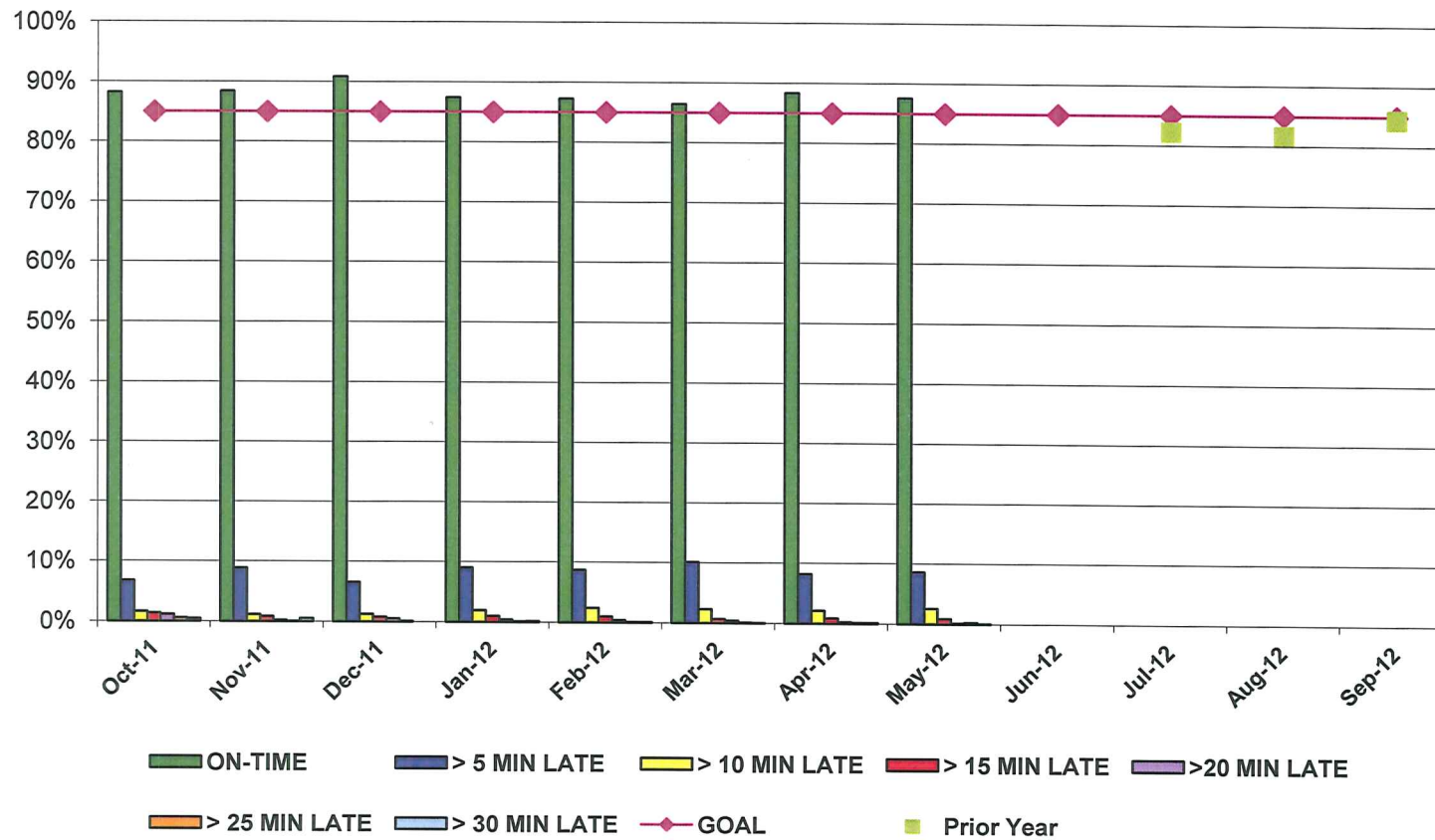
LAKELAND FIXED ROUTE RIDERSHIP FY11-12



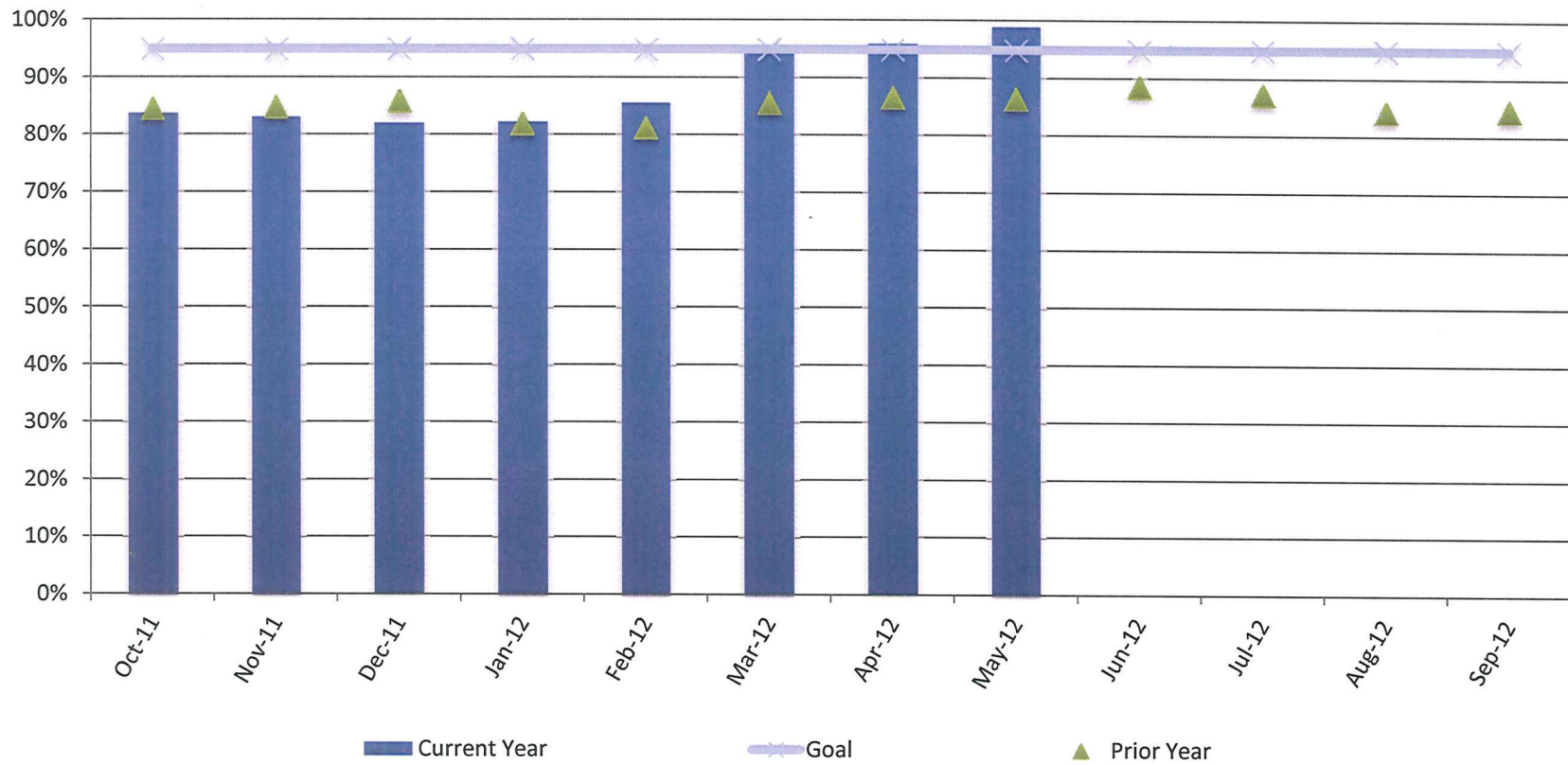
LAKELAND FIXED ROUTE MONTHLY RIDERSHIP FY11-12



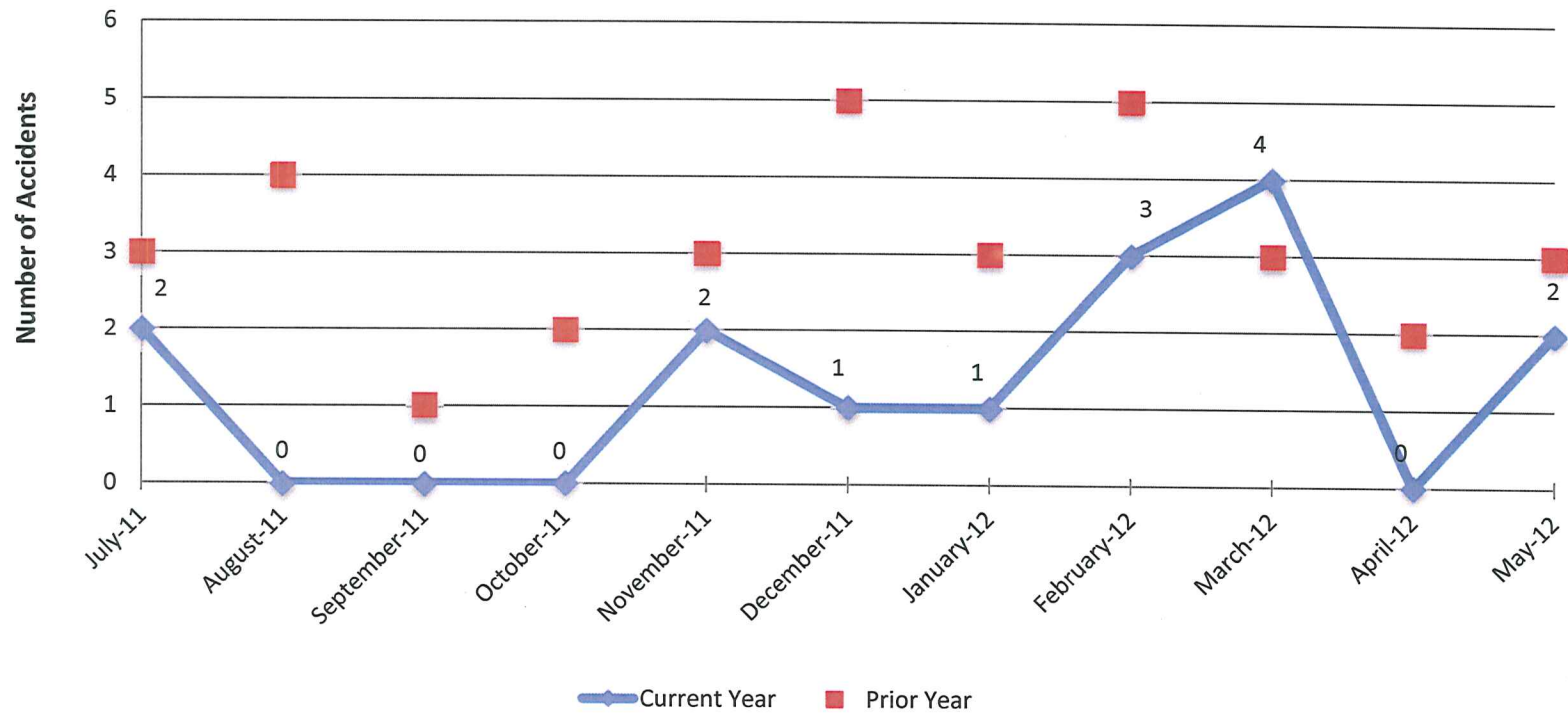
LAKELAND FIXED ROUTE ON-TIME PERFORMANCE **FY 11-12** **(Based on Supervisors' time checks)**



PARATRANSIT ON-TIME PERFORMANCE
FY 11-12
(Based on Paratransit software reporting)



Preventable Accidents FY 11-12



**2012
M A Y
FIXED ROUTE**

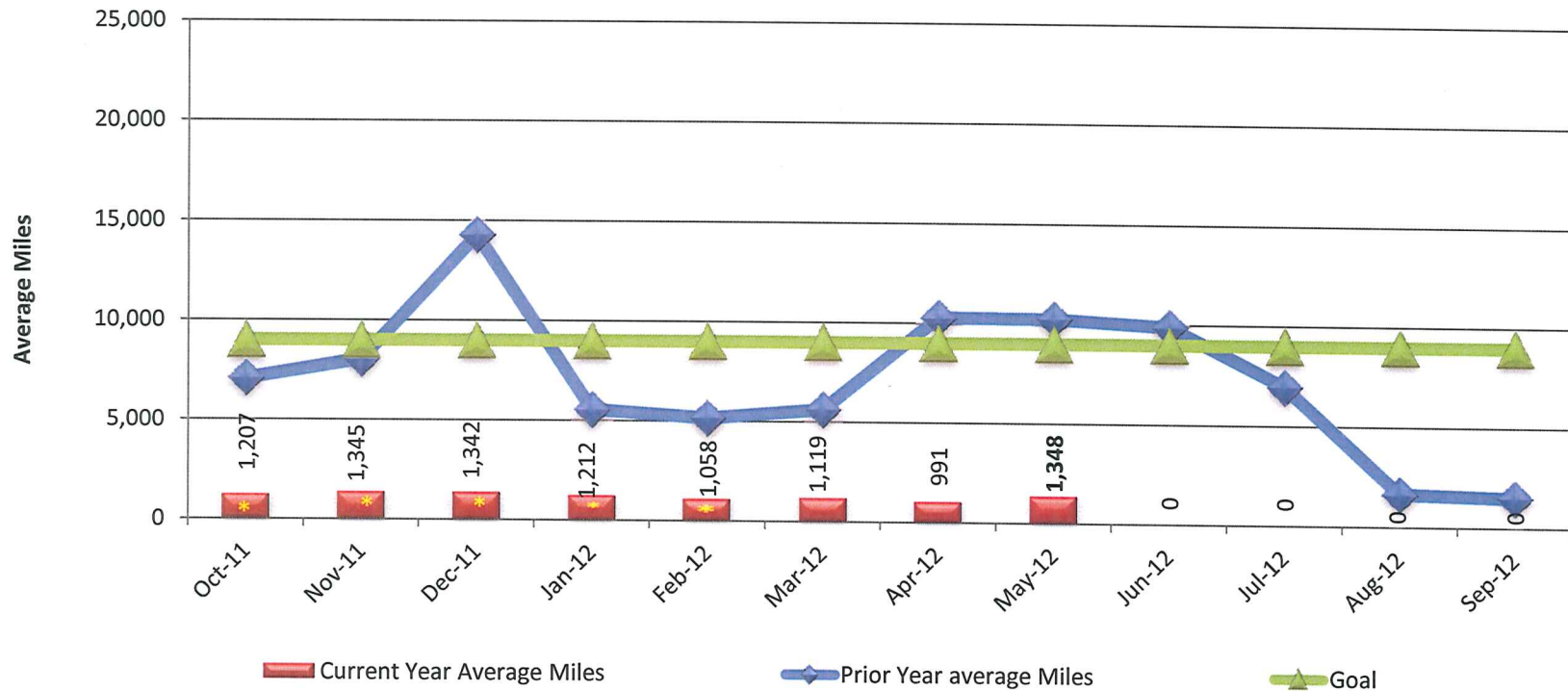
PREVENTABLE ACCIDENTS						
No. Accidents	LAKELAND Bus #	WINTER HAVEN Bus #	Type of Accident	Minor (up to \$999.99)	Moderate (\$1,000.00- \$4,999.99)	Major (Above \$5,000.00)
1	1068		C	\$281.07		
2	375		C	\$149.82		
TOTAL				\$430.89	\$0.00	\$0.00

FIXED ROUTE

NON-PREVENTABLE ACCIDENTS						
No. Accidents	LAKELAND Bus #	WINTER HAVEN Bus #	Type of Accident	Minor (up to \$999.99)	Moderate (\$1,000.00- \$4,999.99)	Major (Above \$5,000.00)
1	1052		C	\$0.00	3,023.91	
TOTAL					\$3,023.91	\$0.00

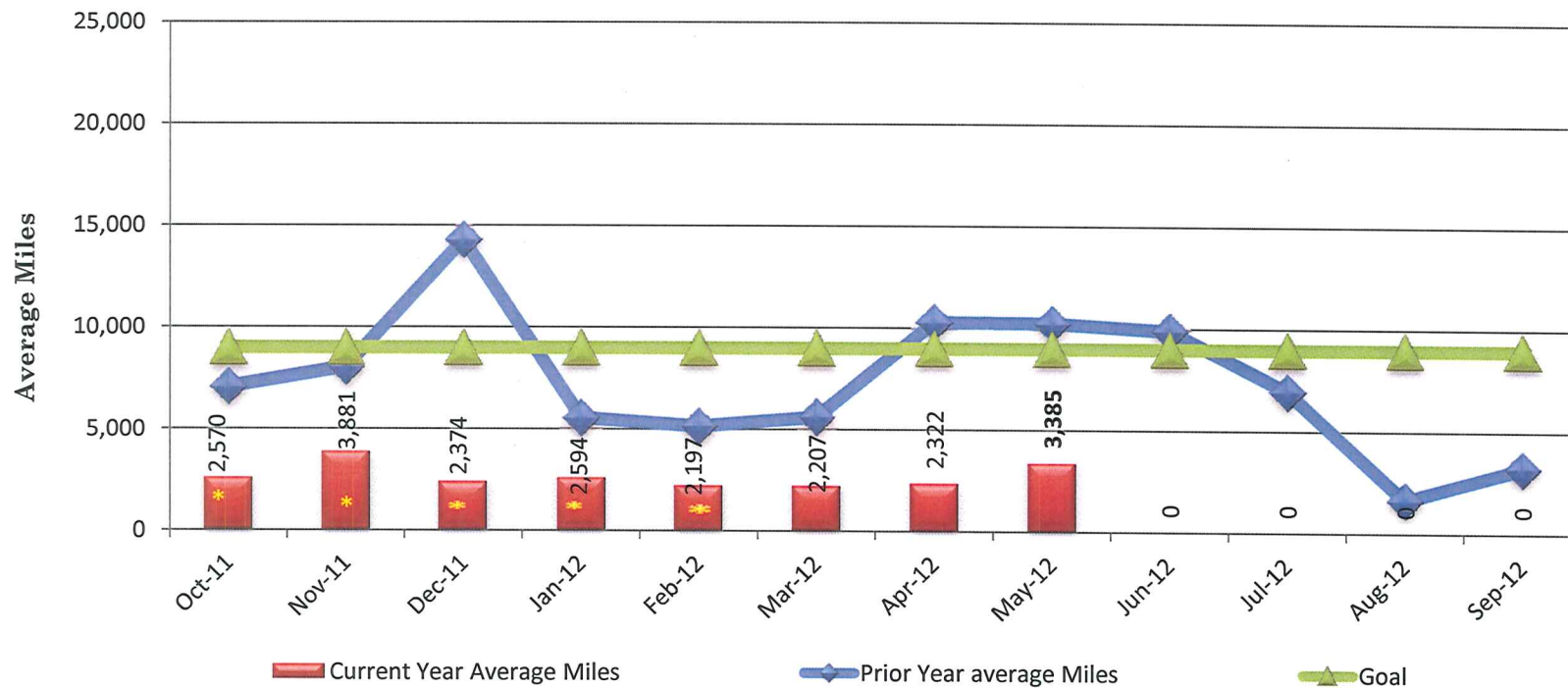
C - Vehicles Contact with object
 PR - Passenger
 Related
 UNK - Unknown

AVERAGE MILES BETWEEN ROAD CALLS FY 10-11



* Calculation of road miles was changed as of October 2009. Mileage is based on Revenue Vehicles (Fixed Route and Paratransit) only. Service vehicle mileage had previously been added to the total mileage.

AVERAGE MILES BETWEEN ROAD CALLS FY 11-12 Excluding Farebox



* Calculation of road miles was changed as of October 2009. Mileage is based on Revenue Vehicles (Fixed Route and Paratransit) only. Service vehicle mileage had previously been added to the total mileage.